

Meets CDC Guidelines for COVID-19 & Other Diseases

IsolationAir®

Portable Total Contamination Control System quickly converts any standard room to an Airborne Infection Isolation Room (AIIR)

Ideal for hospitals, extended care facilities, dental offices, and off-site surge space.

Negative Pressure Room > Contain Viruses & Germs

To create an isolated negative pressure room:

- Enclose the room
- Close off the HVAC to the room to eliminate cross contamination to other spaces
- Add ventilation that generates lower pressure than adjacent areas (negative pressure)

- ✔ Contains virus in the isolation space
- ✘ Closing off the HVAC eliminates heating and cooling and leaves the patient and healthcare worker uncomfortable

UVC Light > Sterilize Viruses

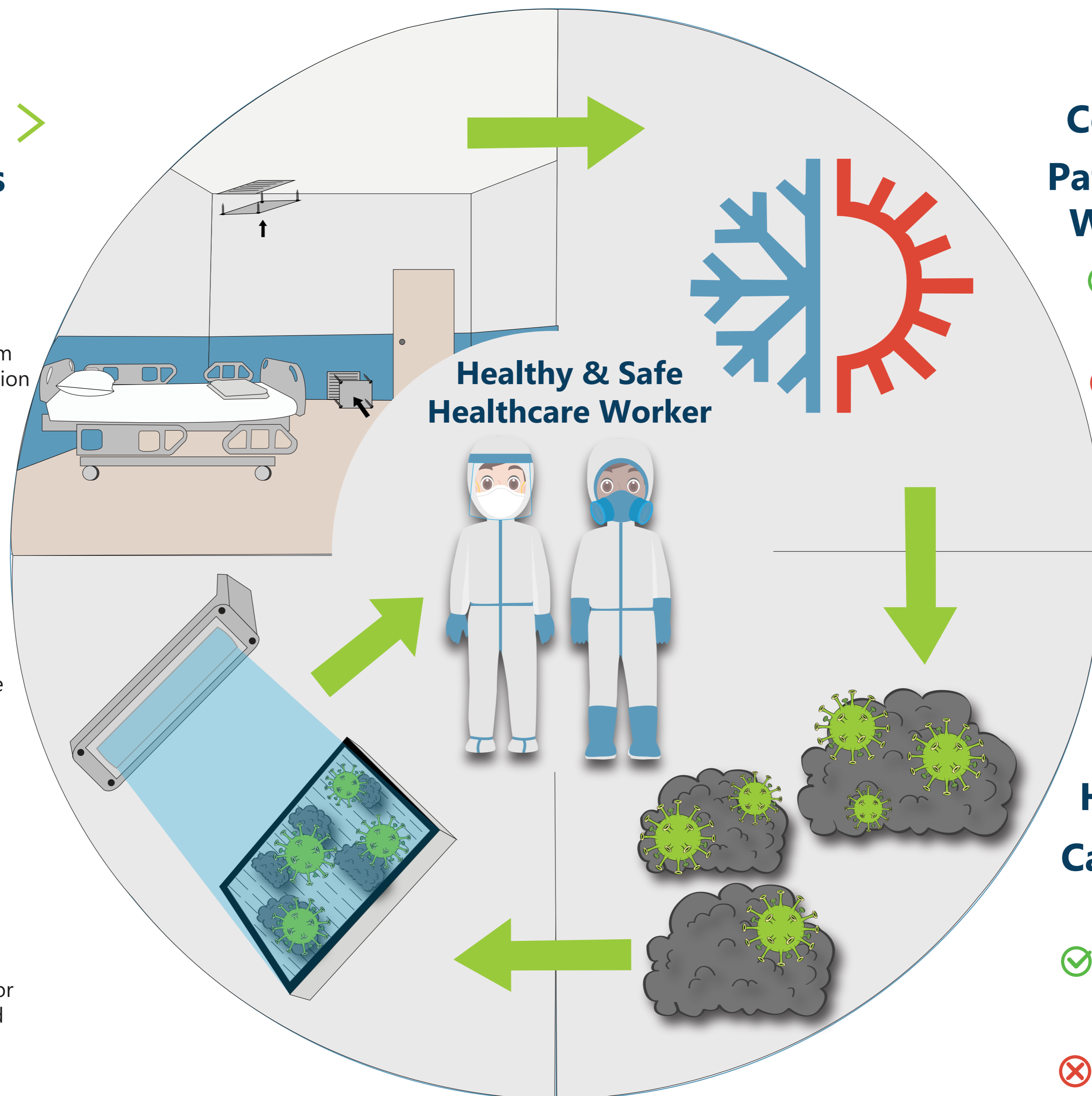
- ✔ UVC light will sterilize the virus.
- ✔ Eliminates the capability for the virus to reproduce and spread.

Heating & Cooling System > Patient/Healthcare Worker Comfort

- ✔ Provides the patient and health care worker with a comfortable environment
- ✘ Can't stop the spread of the virus or kill the virus.

HEPA Filtration > Capture Airborne Contaminants

- ✔ Captures the particles the virus travels on and prevents the spread of airborne virus.
- ✘ Does not neutralize the virus, allowing it to jump to different particles and re-enter the room.



IsolationAir Helps Healthcare Facilities Meet:

- **CDC:**
 - ✔ Guidelines for COVID-19
 - ✔ Isolation Precautions: Preventing Transmission of Infectious Agents in Healthcare Settings
- **ASPR:**
 - ✔ 2017 – 2022 Health Care Preparedness and Response Capabilities
 - Objective 2: Respond to a Medical Surge
 - > Activity #9: Enhance Infectious Disease Preparedness and Surge Response, "Rapidly isolate patients"
 - > Activity #1 Develop Emergency Department and Inpatient Medical Surge Capacity and Capability
 - > Activity #6: Provide Burn care (IsolationAir can be set to create a positive pressure protective environment)
- **ASHRAE:**
 - ✔ COVID-19 ventilation guidance
 - ✔ Standard 170-2017, Ventilation of Health Care Facilities
- **AIA:**
 - ✔ Design and Construction of Hospitals and Health Care Facilities

